

# CoForTips

---

## Component I: Identifying Tipping Points in the Congo basin region

### **WP1** - Biodiversity and resilience landscapes

Sylvie Gourlet-Fleury – Raphaël Pelissier



# General objectives

---

- Improve our understanding of degradation and deforestation
- Improve our understanding of their impact on the structure and diversity of tree communities
- Construct a biodiversity resilience landscape based on relevant definitions of biodiversity

# Tasks and working plan

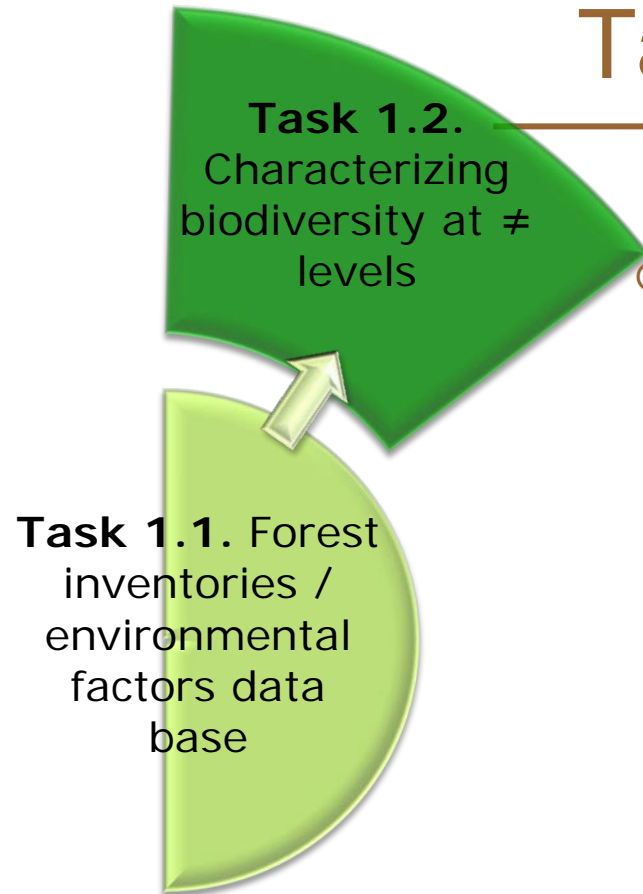
---



**Task 1.1.** Forest  
inventories /  
environmental  
factors data  
base

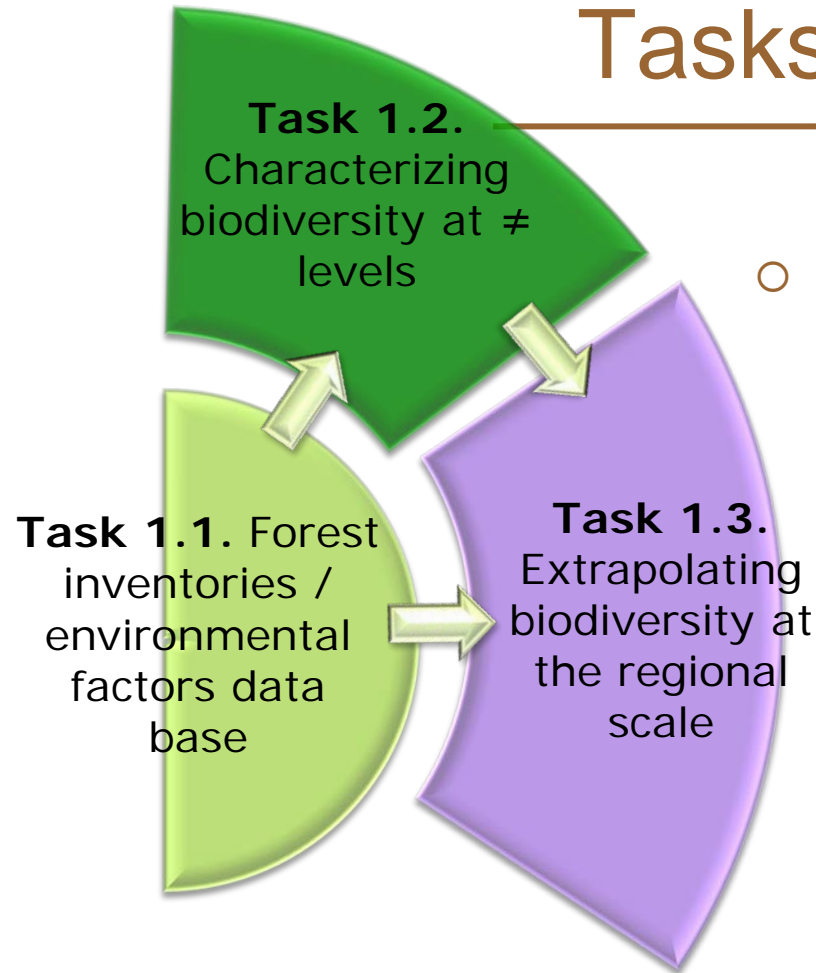
- Task 1.1. Compiling floristic inventories of the Central African forests
  - Starting point: CoForChange data base

# Tasks and working plan



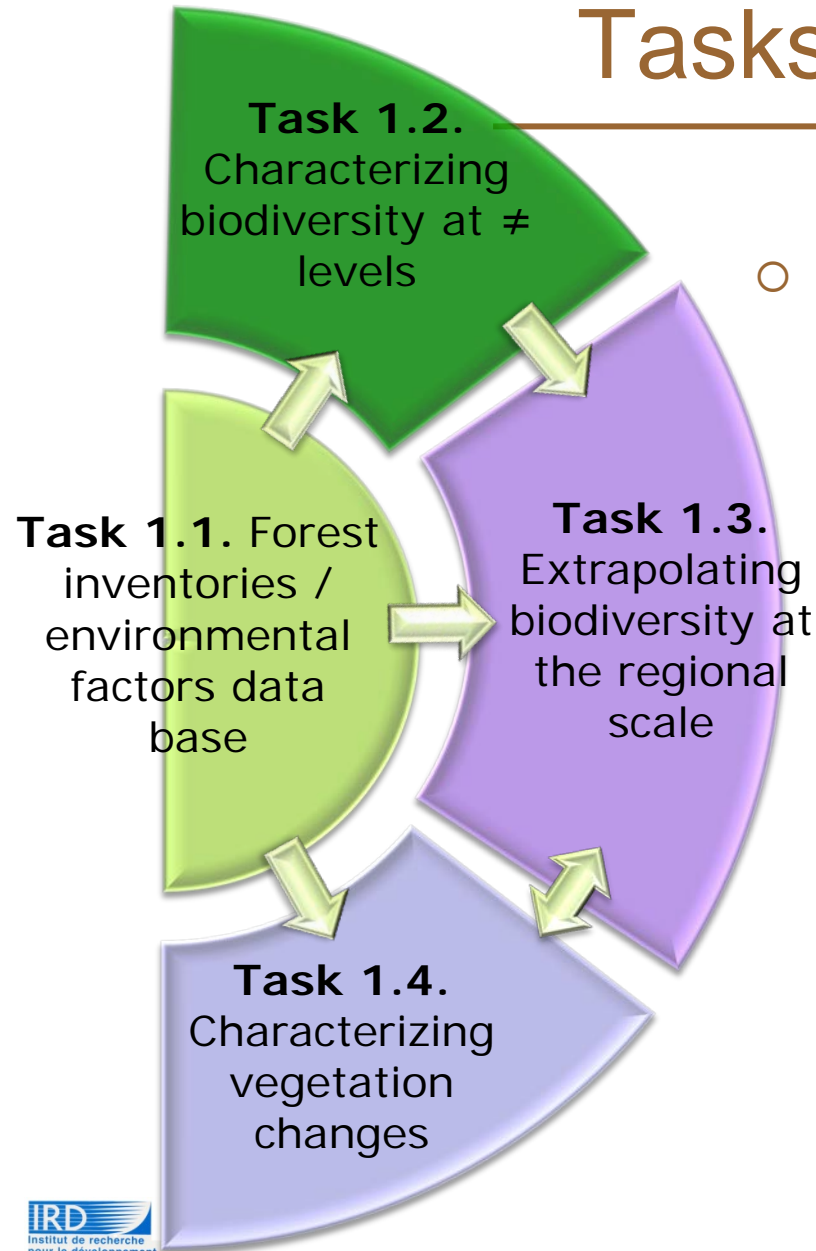
- Task 1.2. Definition of biodiversity and link with functional groups
  - Identification of forest types, relationships between forest types, diversity of genus and diversity of plant functional types
  - What can / should be extrapolated from inventories?

# Tasks and working plan



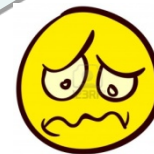
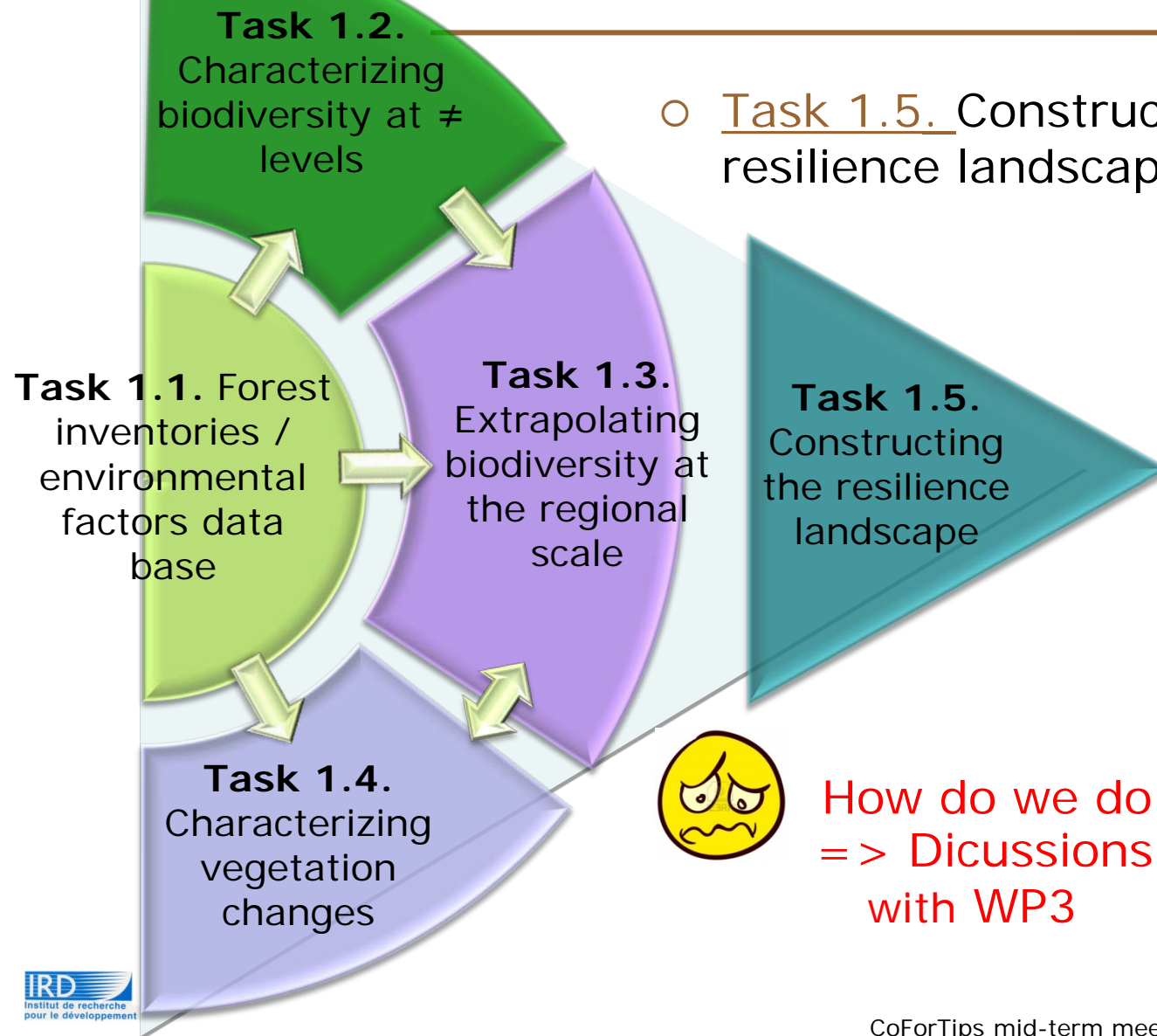
- Task 1.3. Mapping the floristic composition and biodiversity of the Central African forests
  - Calibration of models: spatial pattern of forest types / biodiversity =  $f(\text{environmental factors and remote-sensing imagery at various scales, from tree to MODIS cell})$
  - Extrapolation to the regional scale

# Tasks and working plan



- Task 1.4. Mapping vegetation changes during the last decades
  - Compilation of chronological series of remote-sensing images (MODIS, LANDSAT, SPOT) to track changes (degradation, deforestation, afforestation)

# Tasks and working plan



How do we do that ????

=> Discussions to be led with WP3

# Achievements of 2014

---

- Maxime Réjou-Méchain's presentation
- Valéry Gond's presentation
- Johan Oszwald / Barthélémy Tchiengue's presentations
- Farrel Nguizou Boucka's presentation



# Near future

---

- Maxime is leaving ...
- Jean-François is arriving